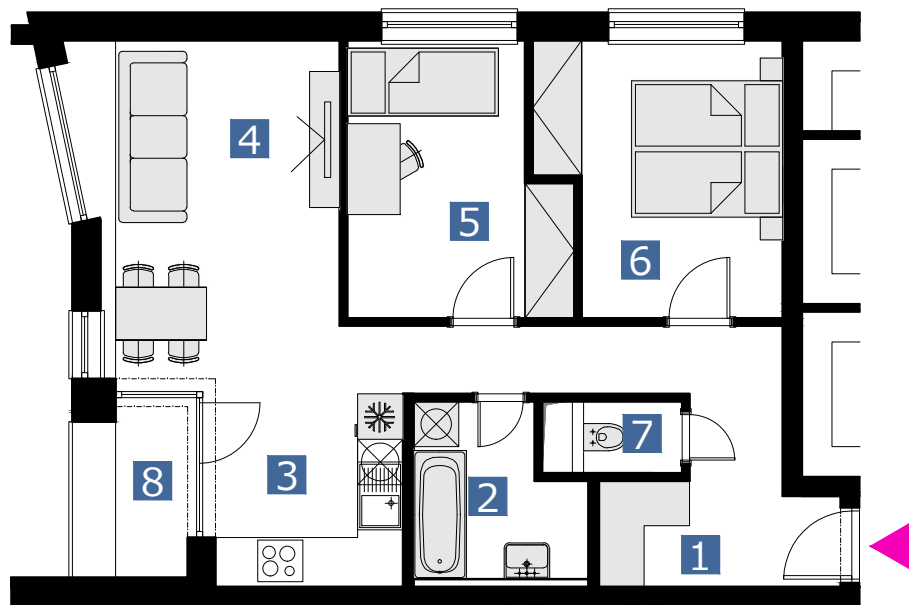


BYT 4FMT / FLAT 4FMT

3 izbový byt / 3 rooms flat



1. vstupná chodba	/lobby	11,83 m ²
2. kúpeľňa	/bathroom	04,91 m ²
3. kuchyňa	/kitchen	10,16 m ²
4. obývací izba	/living room	12,53 m ²
5. izba	/bedroom	09,78 m ²
6. izba	/bedroom	10,91 m ²
7. wc	/wc	01,76 m ²
8. loggia	/loggia	02,48 m ²
CELKOVÁ PLOCHA	/TOTAL	60,89 m²

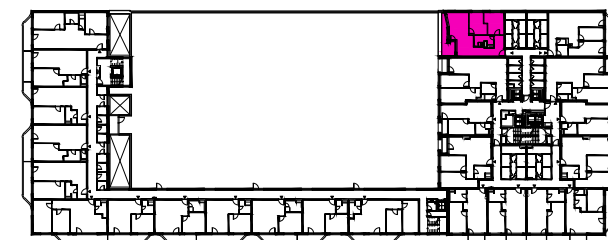
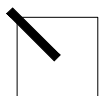


schéma pôdorysu 4. NP
/ scheme of the fourth floor



0 1 2 3 4 5 6 M 1:100

pôdorys je spracovaný na marketingové účely | zariadenie predmety a ich rozmiestnenie má len ilustračný charakter
floor plan is processed for marketing purposes | furniture and its placement is only for illustration